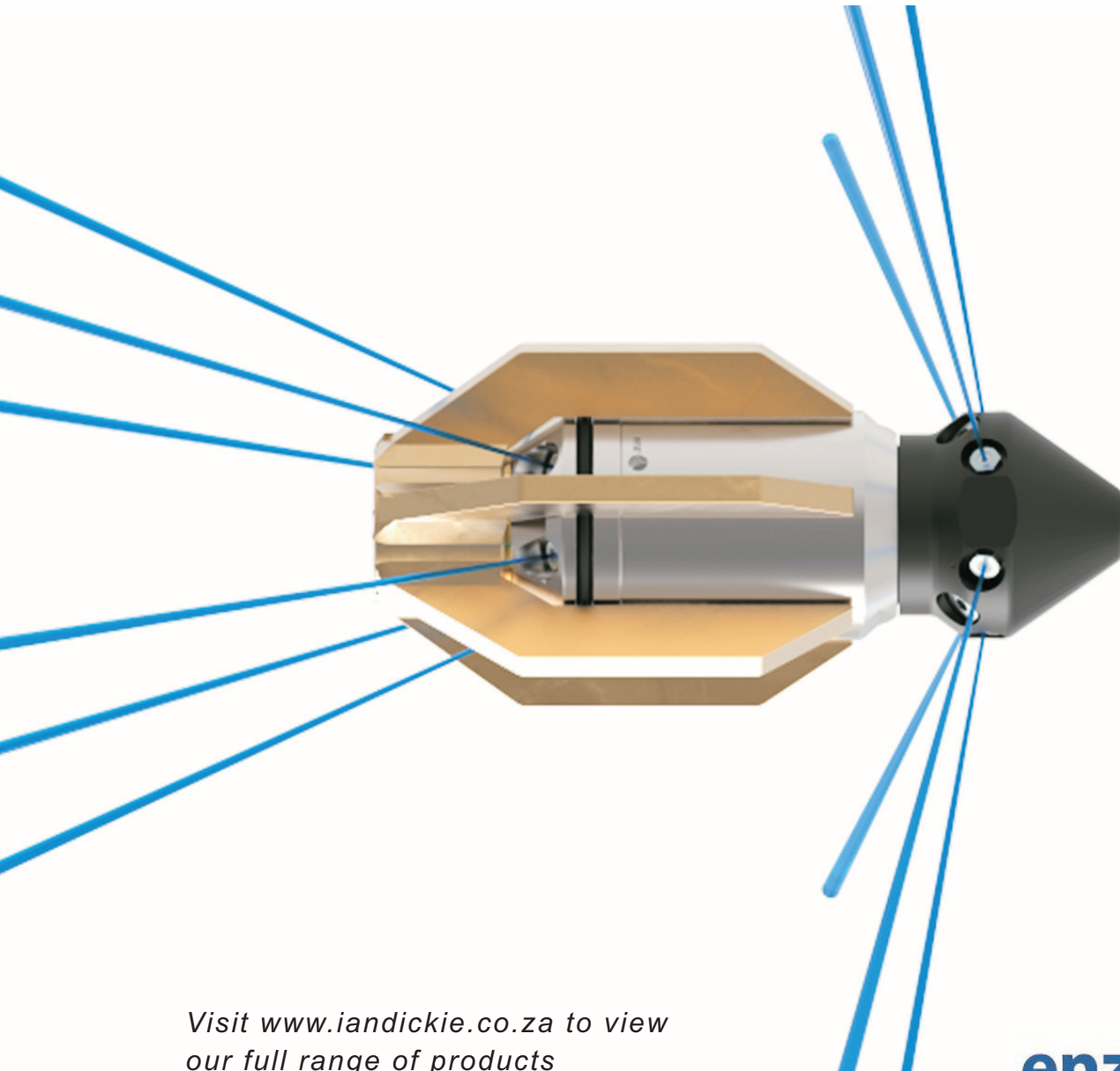




high pressure jetting nozzles



Visit www.iandickie.co.za to view
our full range of products



high pressure jetting nozzles



IAN DICKIE HIGH PRESSURE JETTING NOZZLES



As proud distributors of ENZ products in Southern Africa, Ian Dickie carry a comprehensive range of these high tech products. Manufactured in Switzerland, Enz products are unsurpassed when it comes to workmanship, quality and effectiveness. When used in conjunction with our range of High Pressure Water Jetting Machines our selection of Enz nozzles ensure effective removal of sand, sludge, roots and other blockages in pipes from 15mm - 1000mm. Below is a selection of our most commonly requested nozzles.

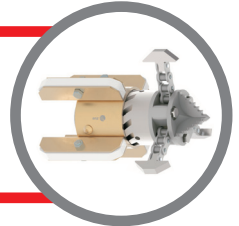
Pointed Nozzle

Penetration of completely clogged pipes, opening of interlaced roots etc.



Chain Scraper

Root cutting, often used for pipe renovation, with coatings, liners etc.



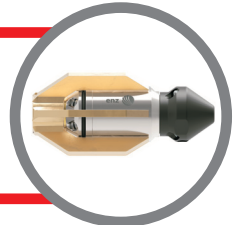
Retrojet

Designed for effective sludge removal in clogged pipes.



Bulldog

Very good all-round cleaning. Ideal for fats, fibrous material and scale.



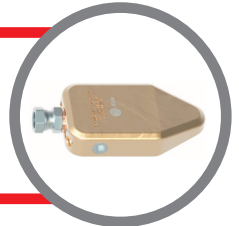
Rotodrill

Removes sludge deposits and clogs using a rotating jet to break up blockages.



Flounder

Removes loose rubble in flat pipes and channels e.g. run-off gutters.



Rotating Nozzle

Effective removal of scale and fats in the line.



Cutters (without impact)

Versatile rotating cutters without impact, for removal of concrete, concrete sludges, roots and wood.



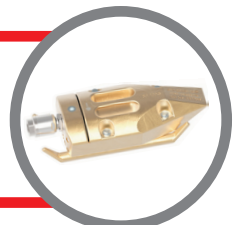
Cutter Ball

Effective removal of scale, mineral deposits and roots. Moves easily around curves without damaging pipes.



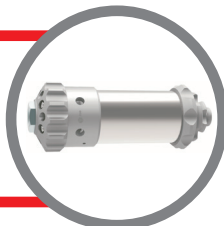
Scraper

Low and compact construction allows for various uses in heavily polluted pipes.



Turbopuls

Removes middle to hard deposits in plastic, steel or concrete pipes.



Grenade Bomb

For removal of loose rubble, stone, gravel and soft deposits.



Cape Town
TEL:(021) 534-3431

Johannesburg
TEL:(011) 609-4130

Port Elizabeth
TEL:(041) 451-1577

Durban
TEL:(031) 700-5636

Botswana
TEL:(+267) 391-4491

